

BatteryShop™ Version 3.0

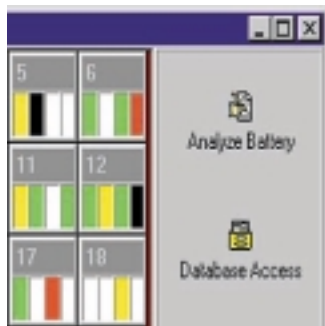
Manage your Batteries from Birth to Retirement

With the sudden increase in battery models, battery testing has become a real challenge. Now, anyone can test and recondition batteries like a pro. Meet BatteryShop™ 3.0 software!

BatteryShop™ works in conjunction with Cadex's C7000 series of battery analyzers. Running on a PC, this advanced software is capable of programming the C7000, storing test data and printing reports. Simple loading and intuitive operation make BatteryShop™ easy to use.



Select battery models quickly



Sample screen showing BatteryShop and the Cadex C7000 monitoring batteries

Click on any of the 2000 batteries in the data-base and the C7000 is set to the correct parameters. Batteries in service appear as coloured fields on your monitor. Yellow indicates a battery is in service. Green indicates the battery is a "go." Red indicates the battery has failed. White is an empty adapter and black indicates no adapter installed.

Improve customer service

BatteryShop™ is designed for the untrained user. Little or no battery knowledge is needed. Service programs include Impedance check, Priming and Reconditioning. You can also store customer names, addresses and phone numbers.

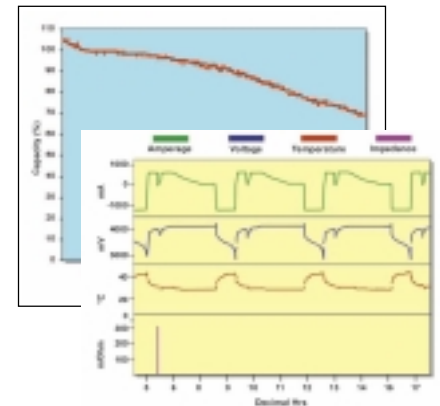
Keep track of your battery fleet

Keeping track of a large pool of batteries is difficult, especially when trying to follow a regular maintenance plan. With BatteryShop™ you have full control of your battery inventory. You can review performance history at a glance. You are informed when service is due. Regular maintenance improves battery performance and doubles, or even triples, battery life.

Maintain consistent battery quality

BatteryShop™ offers a low-cost solution to battery testing and quality control.

Voltage, current and temperature information are shown in real time graphs. These can be printed in customized formats.



Sample screen of BatteryShop graphs

Generate battery labels

Text labels print out battery group, performance and last service date. *Barcode labels* save time and simplify operations. A quick scan configures the C7000 to the battery's specific parameters. BatteryShop™ updates all service records related to that battery. BatteryShop's dual labelling system is an effective tool designed to keep you informed.



Specifications BatteryShop™ 3.0

System

BatteryShop™ is a battery management software that works in conjunction with the Cadex C7000 Series of battery analyzers. BatteryShop™ stores test data, which enables performance analysis and cost studies. BatteryShop's database includes a listing of all major portable batteries. Programming the analyzer to the appropriate battery occurs with a mouse-click on a selected battery model. For battery fleet operators, scanning a bar code programs the analyzers. All test information pertaining to the battery is stored under the ID number. Custom programs allow simulated load, self-discharge and full life cycle testing.

Application Service Centers	BatteryShop offers <ul style="list-style-type: none"> - Search battery type on database; verify ratings - Program C7000 with point-and-click action - Store customer names, addresses, phone numbers
Battery Fleets	<ul style="list-style-type: none"> - Track batteries using adhesive bar code labels - Notify operator to perform periodic maintenance - Store performance history for analysis - Program C7000 by reading bar code label on batteries
Quality Control	<ul style="list-style-type: none"> - Create special tests with custom programs - Verify suitability of batteries for given application - Perform warranty, cycle life and self-discharge tests

Custom programs

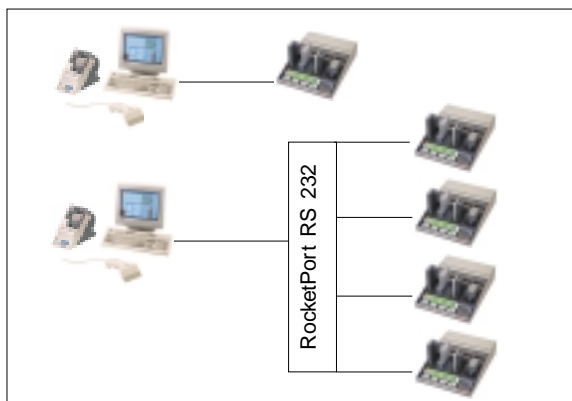
Batteryshop™ enables the creation of custom management programs. Programs can be saved on your PC, then accessed when required. Service Programs and battery parameters are automatically downloaded to an analyzer when battery service is initiated. The number of programs that can be defined is limited only by the maximum capacity of the database. All edit operations can be secured by password to prevent unauthorized users from modifying the database.

Connecting the PC and the analyzer

C7000 Series Analyzers (V3.4 or higher) are connected to the COM ports on an IBM-compatible PC by a specially configured cable terminated with DB-9 RS 232 plugs. BatteryShop™ ships with a 20 ft. cable.

Expandability

BatteryShop™ is designed to operate up to 120 analyzers for simultaneous service to a maximum of 480 batteries.



BatteryShop™ Supports Single or Multiple Chargers

Multiplexer for expansion of COM ports

COM port multiplexers are used to connect multiple C7000 units to a PC. Multiplexers for 4, 8, 16 and 32 port expansion are available from Cadex. Multiplexers can be daisy chained together to connect up to 120 C7000 units. RocketPort (by Comtrol) has been tested with BatteryShop™ and is strongly recommended. For 4 ports or more, a RocketPort PCI-bus serial controller is included.

Life-Cycling PC Memory requirements (Bytes):

Analyzers	Batteries	1 Day	1 Month	1 Year
1	1	120,000	3,600,000	43,200,000
120	480	57,600,000	1,728,000,000	20,736,000,000

Windows NT recommended for Life-Cycle operations Daily Log feature turned off

Computer requirements

Windows 95, Windows 98 or Windows NT (SP4) installed; Windows NT preferred. Pentium 200 MHZ or better. Minimum 2.5 GB hard drive recommended; 160 MB available disk space necessary. Minimum 32 MB of RAM main memory for Windows 95 or 98; 64 MB of RAM main memory for Windows NT 4.0

Note: RAM requirements increase in direct proportion to the number of analyzers. One system COM port for each Cadex Analyzer unless used with COM port Multiplexers. SVGA color monitor - 256 color and 800 x 600 resolution minimum; Mouse. Dedicated PC recommended for data collection with multiplexers. CD ROM drive (4X or better)

Recommended peripherals

Alphanumeric-capable keyboard emulation bar code scanner. Label printer (DYMO-CoStar EL60 Labelwriter). Standard Windows compatible printer (for printing reports) with at least 360 dpi resolution. COM port multiplexers (see section on Multiplexers below) Cadex-configured connecting cables as needed.

Specifications subject to change without notice.
 Copyright 2000 by Cadex Electronics Inc. Printed in Canada.



Cadex Electronics Inc.

22000 Fraserwood Way, Richmond, BC, Canada V6W 1J6

Tel +1 604 231-7777 Fax +1 604 231-7755 Toll Free 1-800-565-5228 (North America)

info@cadex.com www.cadex.com



1BS-EN-SPEC.0600